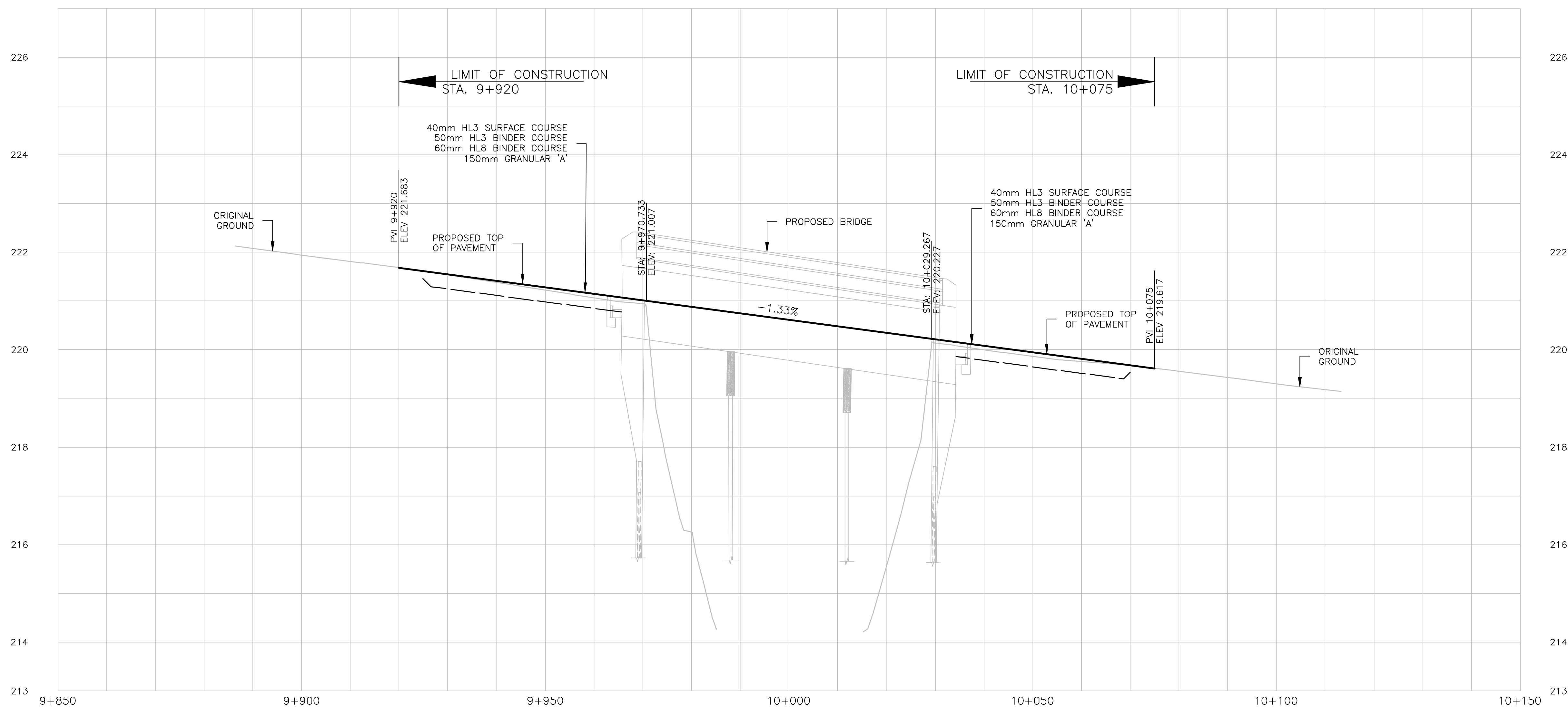


COUNTY ROAD 17 (NAIRN ROAD)



DILLON CONSULTING LIMITED, 130 DUFFERIN AVENUE, LONDON, ONTARIO, M6A 5R2, PHONE (519) 438-6192, FAX (519) 672-8209

FILENAME: C:\PW\WORKING DIRECTORIES\PROJECTS 2021\04\08\00118670\MIDDLESEX_BORDER.DWG PLOTTED BY: STUDNICKA, VERONICA
PLOT DATE: 2023-10-13 @ 9:53:47 AM PLOT SCALE: 1:25.4 PLOT STYLE: MTD_MONOCHROME_FULL_SIZE.CTB

Conditions of Use

Verify elevations and/or dimensions on drawing prior to use. Report any discrepancies to Dillon Consulting Limited.
Do not scale dimensions from drawing.
Do not modify drawing, re-use it, or use it for purposes other than those intended at the time of its preparation without prior written permission from Dillon Consulting Limited.



DESIGN	JCR	REVIEWED BY	VJS
DRAWN	JCR	CHECKED BY	VJS
DATE	OCT. 18, 2023		
SCALE	25.4 : 1 HORIZONTAL 1:25.4 VERTICAL		
No.	1	ISSUED FOR TENDER	OCT 2023
		ISSUED FOR	DATE

**NAIRN BRIDGE OVER AUSABLE RIVER
PROJECT NO. M-K-23**

PROJECT NO.
21-2363

NEW CONSTRUCTION - PROFILE

SHEET NO.

03