



MIDDLESEX COUNTY | CYCLING STRATEGY

Welcome!

Public Information Centre #1
June 29th, 2017 | 6:30 – 8:30 p.m.

Chris Traini
County of Middlesex
E: ctraini@middlesex.ca
T: (519) 434-7321 Ext. 2264

Jay Cranstone
WSP Canada Group Ltd.
E: cranstonej@mmm.ca
T: (519) 904-1755



ABOUT

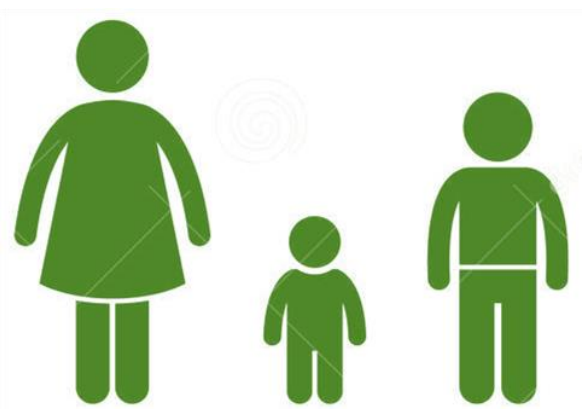


Objectives



1

Create a plan for a **connected and continuous** system of **cycling routes**



2

Establish a network that makes **cycling more convenient and enjoyable** for people of all ages and abilities



3

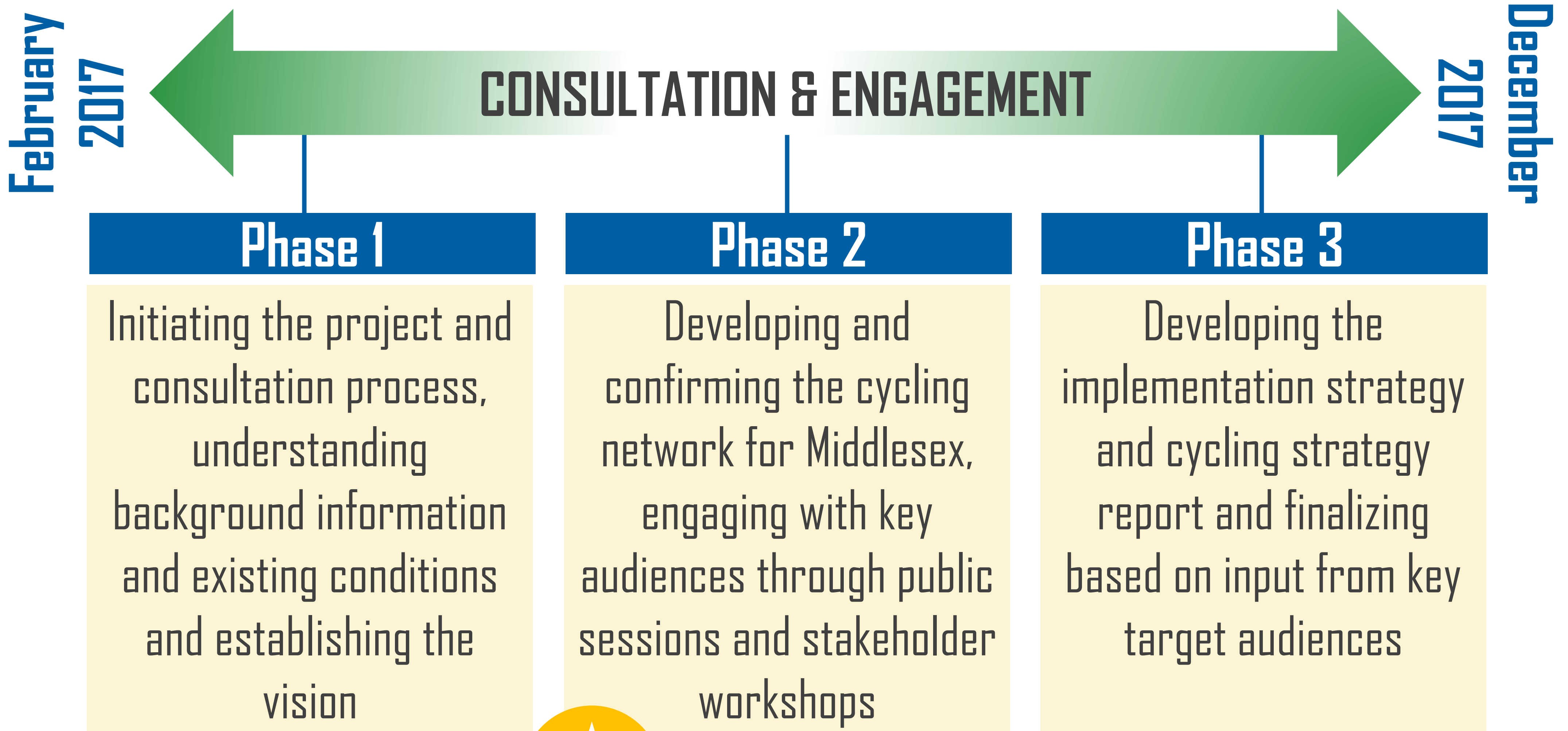
Enhance Middlesex as a **destination for cycling** while creating more healthy and sustainable communities



4

Provide the County and Local Municipal staff with **tools to help with decision-making** related to cycling

Process



We are here!



ABOUT



Vision

“

Middlesex County is made up of communities and destinations that are connected by a continuous system of cycling routes and facilities, which provide opportunities for people to bicycle for transportation, fitness, fun, or as part of a longer bicycle tour. Cycling is encouraged County-wide and is supported by the local area municipalities making it attractive to both residents and visitors.

”

Goals



1

Supporting continuous and connected routes



2

Providing opportunities for different types of cycling trips



3

Providing cyclists with well maintained infrastructure



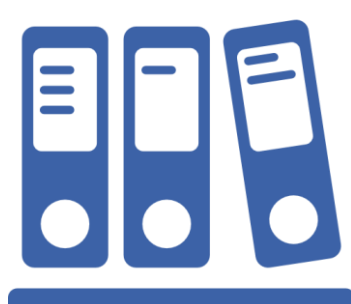
4

Encouraging cycling as a form of transportation



5

Integrating cycling into day to day decision making



6

Establishing policies and plans that support cycling



7

Creating a foundation of commitment from partners

WHO



The Many Faces of Cycling

Strong & Dedicated



<1%

Enthusied & Confident



7%

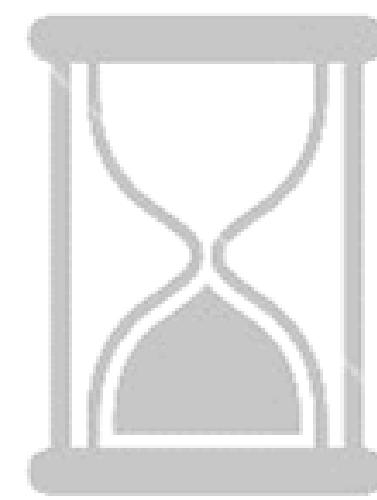
Interested but Concerned



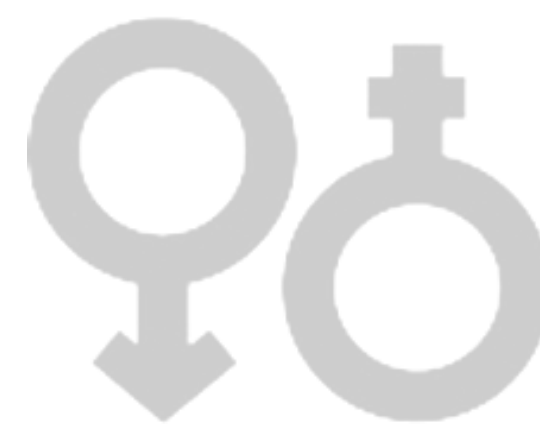
60%

No Way no How

33%



AGE



GENDER



LOCATION



EXPERIENCE



EDUCATION



VALUES

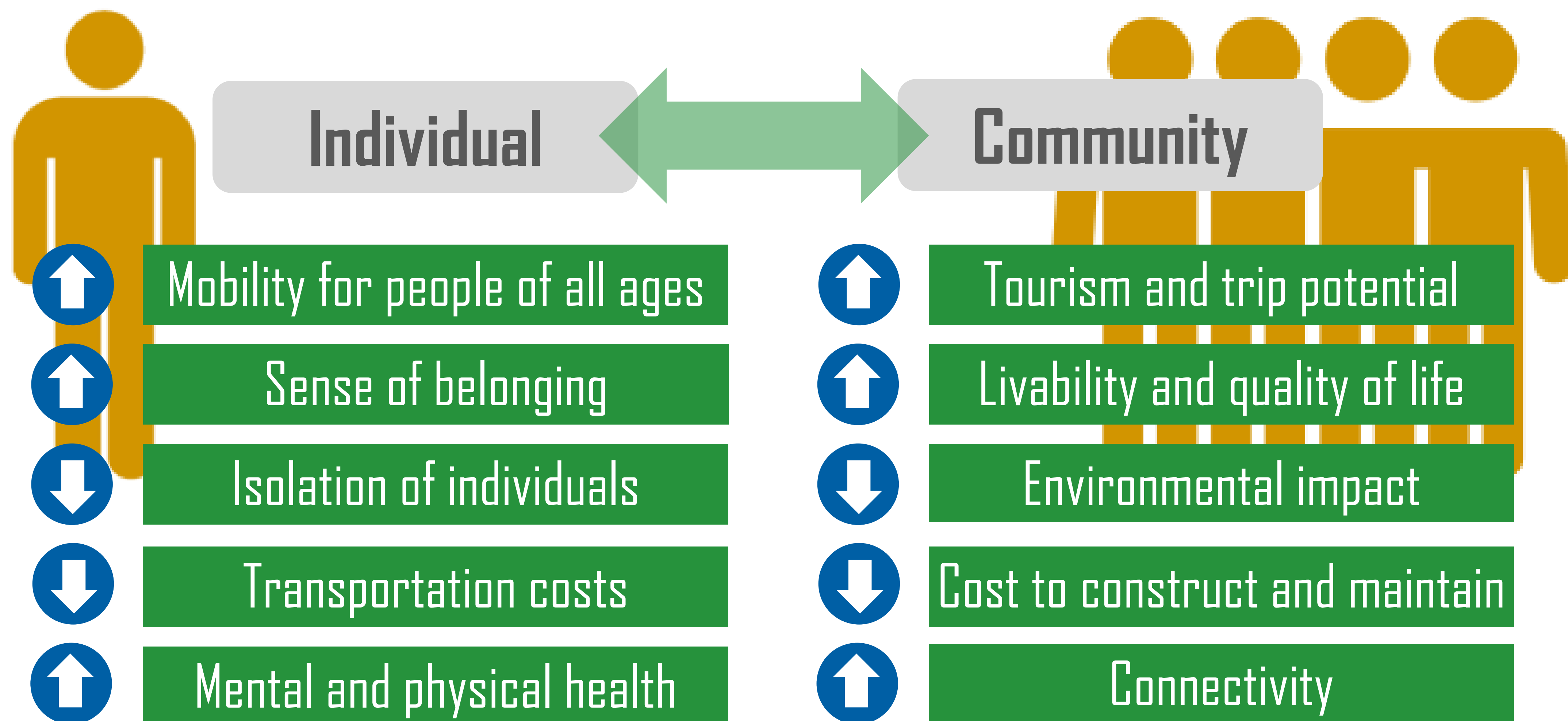


WHY

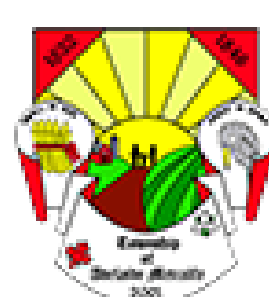


MIDDLESEX COUNTY
CYCLING STRATEGY

Benefits



Policies



HOW

Development Process



MAP 2-1

CANDIDATE CYCLING ROUTES MIDDLESEX COUNTY DRAFT JUNE 2017

Legend

Candidate Cycling Routes

- Candidate County Route
- Candidate Local Route
- Candidate Provincial Route
- Candidate Off-Road Trail

Existing Trail

- Existing Off-Road Trail
- Existing On-Street Cycling Facility
- Existing Paved Shoulder

Previously Proposed Cycling Routes

- Previously Proposed Trail

Key Community Destinations

- Hospital
- Libraries
- Municipal Office
- Place of Worship
- Public Parking
- Transit Station
- Emergency Service
- School
- Railway Station

Transportation Features

- Provincial Highway
- County Road
- Local Road
- Proposed Road
- Discontinued Railway
- Operational Railway
- Cycling Connection to Surrounding Municipality

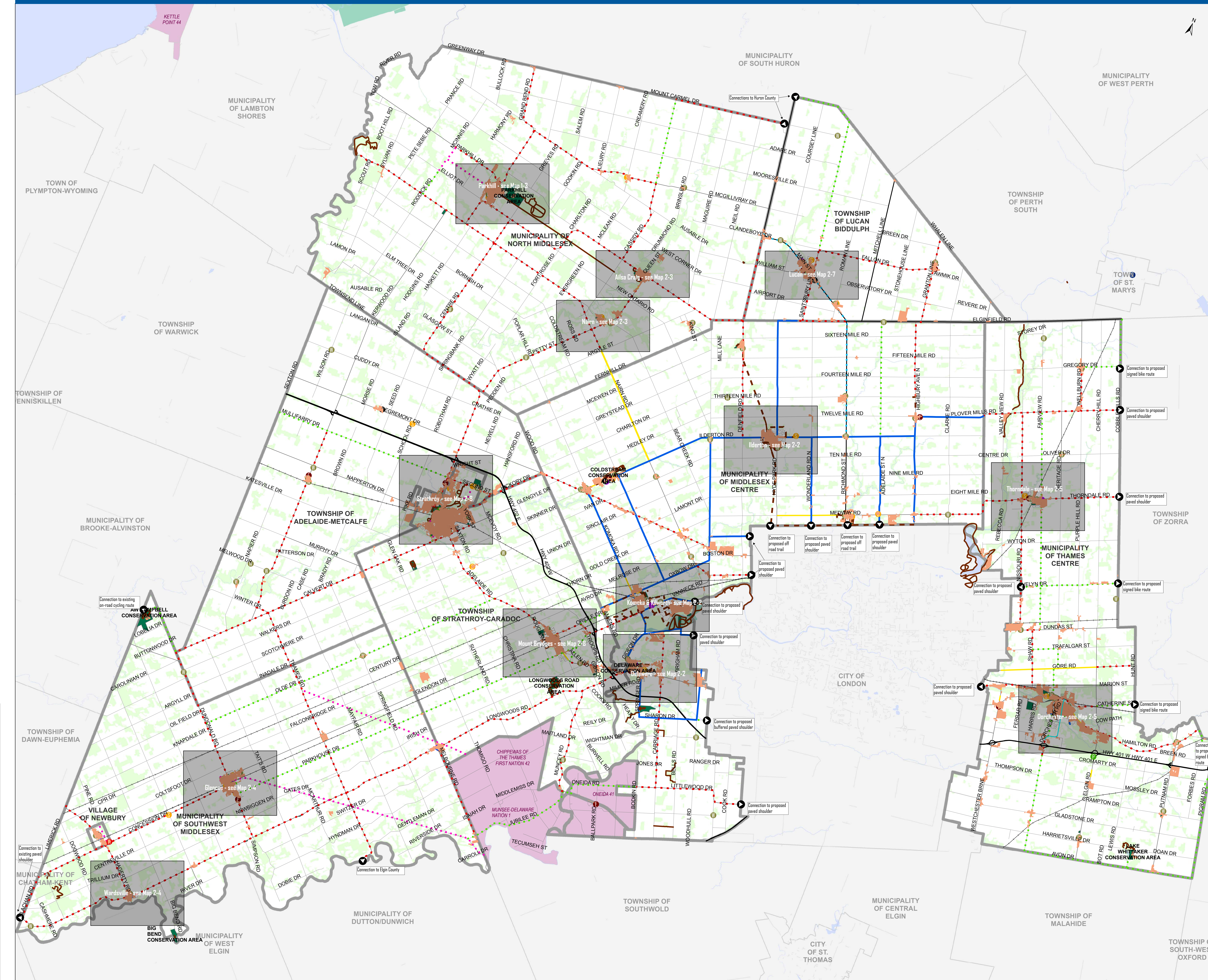
Other

- Municipal Boundary
- Built Up Area
- Provincial Parkland
- First Nations Land
- Natural Heritage System
- Local Parkland

0 2.5 5 10 km



Projection: UTM Zone 17 N. Datum: NAD 1983.
Map Created in June 2017 by WSP Canada.
Spatial data provided by the County of Middlesex, 2017.
Parcel data © Teranet Enterprises Inc. and its suppliers.
All rights reserved. Not a plan of survey. 2015 Image
includes material © 2016 of the Queen's Printer for
Ontario. All Rights Reserved. Additional data from the
Ontario Ministry of Natural Resources, Queens Printer
2017. Note: Map is not intended for navigation.



MAP 2-2

CANDIDATE CYCLING ROUTES MUNICIPALITY OF MIDDLESEX CENTRE

DRAFT JUNE 2017

Legend

Candidate Cycling Routes

- Candidate County Route
- Candidate Local Route
- Candidate Provincial Route
- Candidate Off-Road Trail

Existing Cycling Routes

- Existing On-Road Cycling Facility
- Existing Paved Shoulder
- Existing Off-Road Trail

Previously Proposed Cycling Routes

- Previously Proposed Off-Road Trail

Key Community Destinations

- Hospital
- Libraries
- Municipal Office
- Place of Worship
- Public Parking
- Transit Station
- Emergency Service
- School
- Railway Station

Transportation Features

- Provincial Highway
- County Road
- Local Road
- Proposed Road
- Discontinued Railway
- Operational Railway
- Connection to Surrounding Municipality

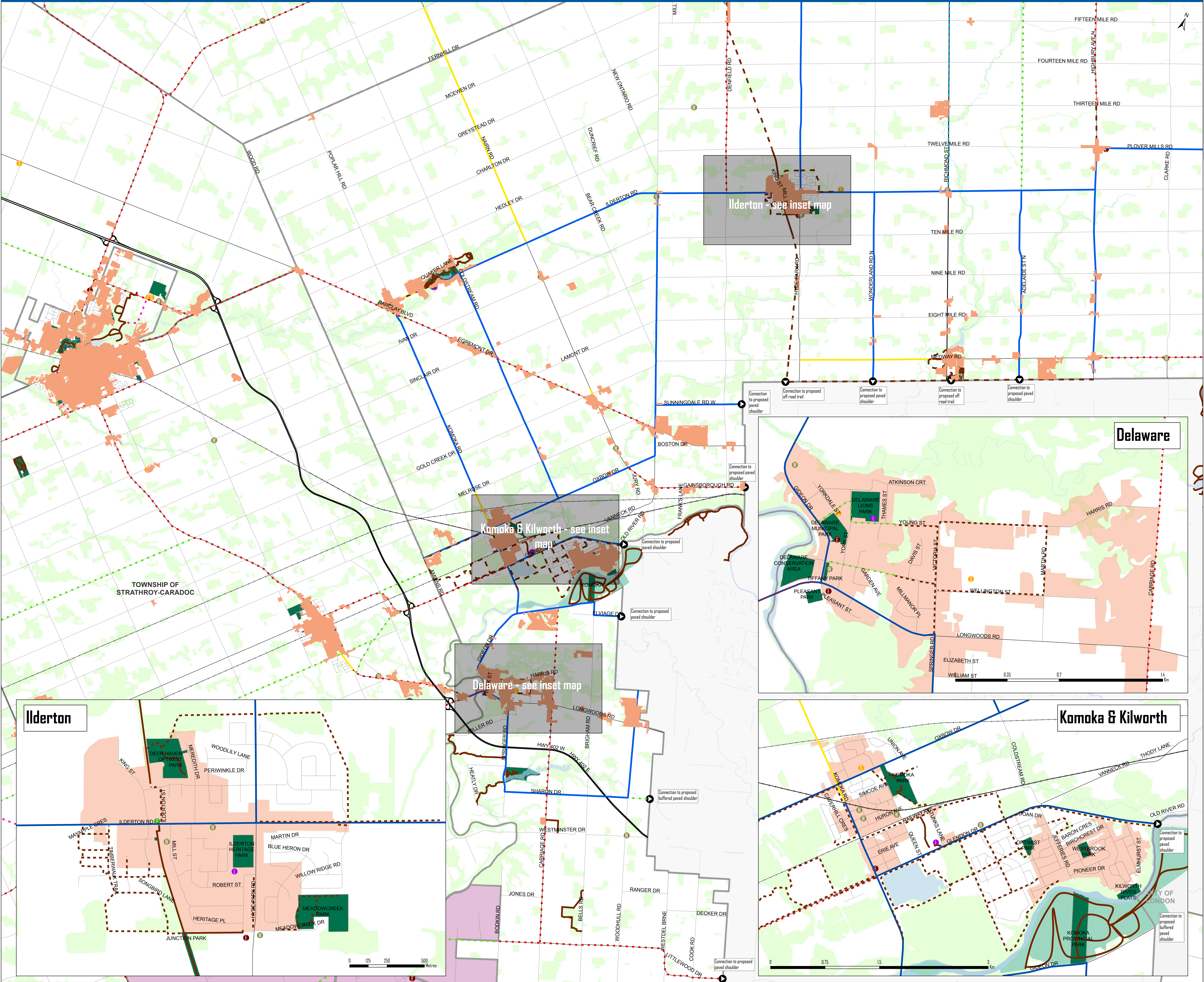
Other

- Municipal Boundary
- Built Up Area
- Provincial Parkland
- First Nations Land
- Natural Heritage System
- Local Parkland

0 1 2 3 4 km



Projection: UTM Zone 17 N. Datum: NAD 1983.
Map Created in June 2017 by WSP Canada.
Spatial data provided by the County of Middlesex, 2017.
Parcel data © Teranet Enterprises Inc. and its suppliers.
All rights reserved. Not a plan of survey. 2015 Image
includes material © 2016 of the Queen's Printer for
Ontario. All Rights Reserved. Additional data from the
Ontario Ministry of Natural Resources, Queens Printer
2017. Note: Map is not intended for navigation.



MAP 2-3

CANDIDATE CYCLING ROUTES MUNICIPALITY OF NORTH MIDDLESEX

DRAFT JUNE 2017

Legend

Candidate Cycling Routes

- Candidate County Route
- Candidate Local Route
- Candidate Provincial Route
- Candidate Off-Road Trail

Existing Cycling Routes

- Existing On-Road Cycling Facility
- Existing Off-Road Trail
- Existing Paved Shoulder

Previously Proposed Cycling Routes

- Previously Proposed Off-Road Trail

Key Community Destinations

- Hospital
- Libraries
- Municipal Office
- Place of Worship
- Public Parking
- Transit Station
- Emergency Service
- School
- Railway Station

Transportation Features

- Provincial Highway
- County Road
- Local Road
- Proposed Road
- Discontinued Railway
- Operational Railway
- Connection to Surrounding Municipality

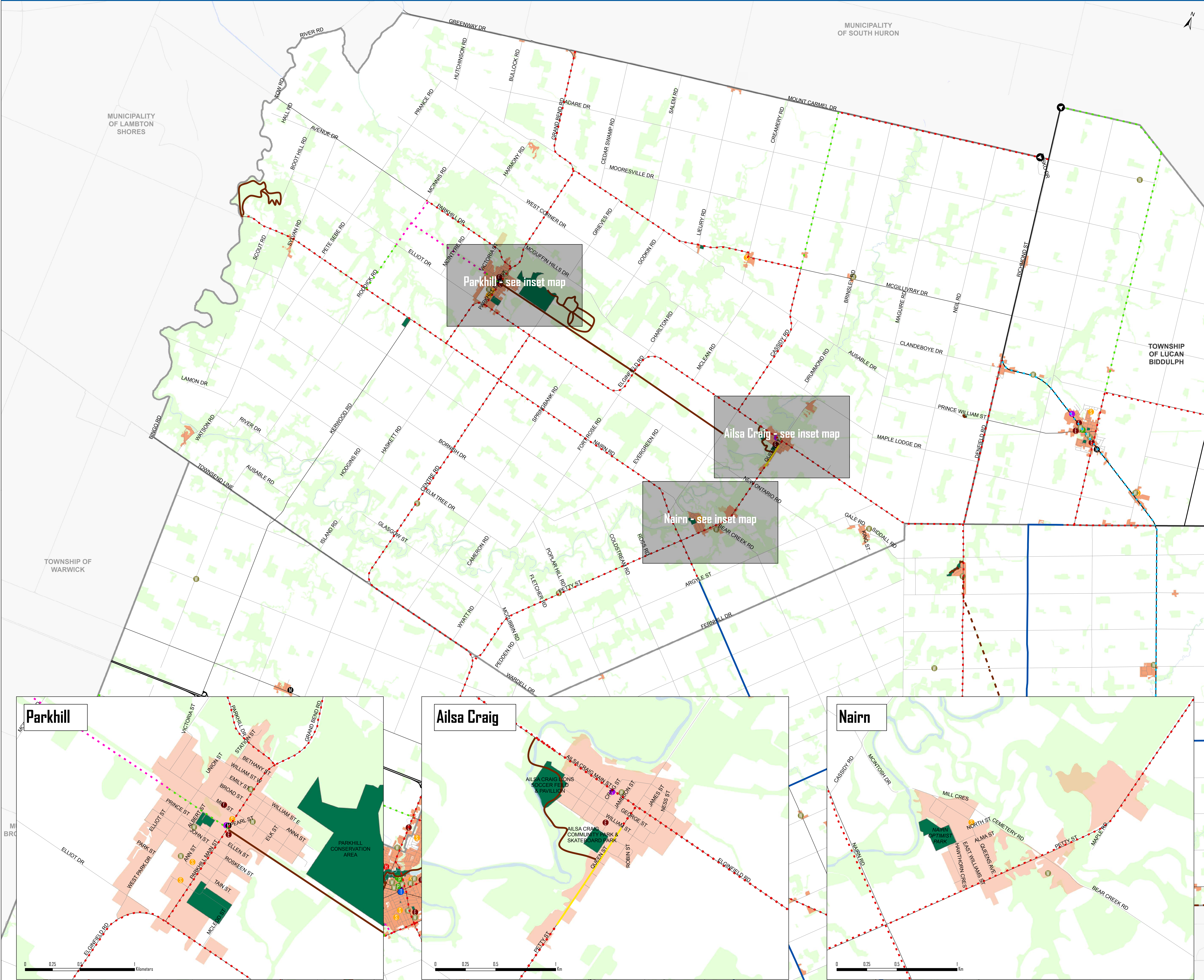
Other

- Municipal Boundary
- Built Up Area
- Provincial Parkland
- First Nations Land
- Natural Heritage System
- Local Parkland

0 1.25 2.5 5 Km



Projection: UTM Zone 17 N. Datum: NAD 1983.
Map Created in June 2017 by WSP Canada.
Spatial data provided by the County of Middlesex, 2017.
Parcel data © Teranet Enterprises Inc. and its suppliers.
All rights reserved. Not a plan of survey. 2015 Image
includes material © 2016 of the Queen's Printer for
Ontario. All Rights Reserved. Additional data from the
Ontario Ministry of Natural Resources, Queens Printer
2017. Note: Map is not intended for navigation.



MAP 2-4

CANDIDATE CYCLING ROUTES MUNICIPALITY OF SOUTHWEST MIDDLESEX

DRAFT JUNE 2017

Legend

Candidate Cycling Routes

- Candidate County Route
- Candidate Local Route
- Candidate Provincial Route
- Candidate Off-Road Trail

Existing Cycling Routes

- Existing On-Road Cycling Facility
- Existing Paved Shoulder
- Existing Off-Road Trail

Previously Proposed Cycling Routes

- Previously Proposed Off-Road Trail

Key Community Destinations

- Hospital
- Libraries
- Municipal Office
- Place of Worship
- Public Parking
- Transit Station
- Emergency Service
- School
- Railway Station

Transportation Features

- Provincial Highway
- County Road
- Local Road
- Proposed Road
- Discontinued Railway
- Operational Railway
- Connection to Surrounding Municipality

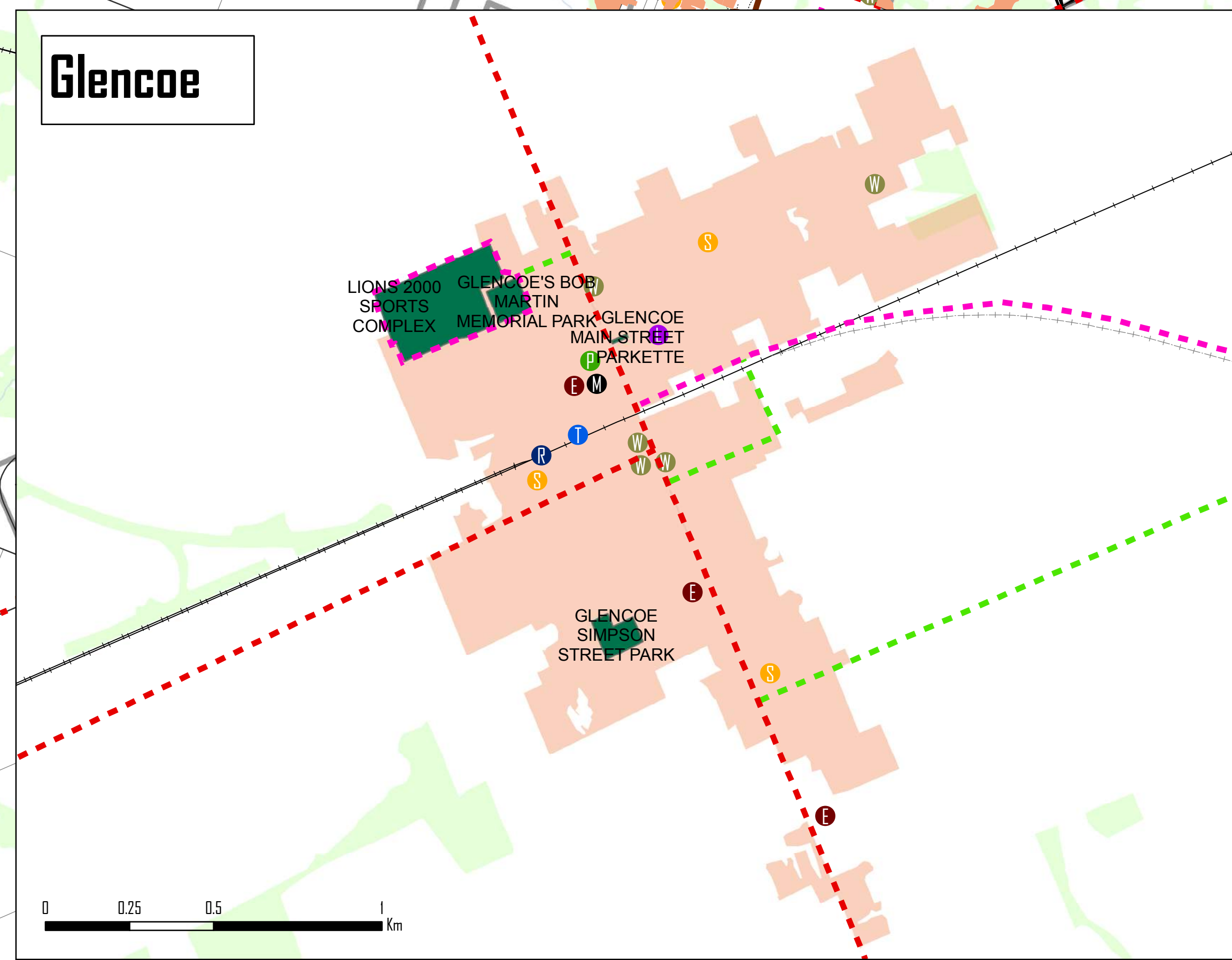
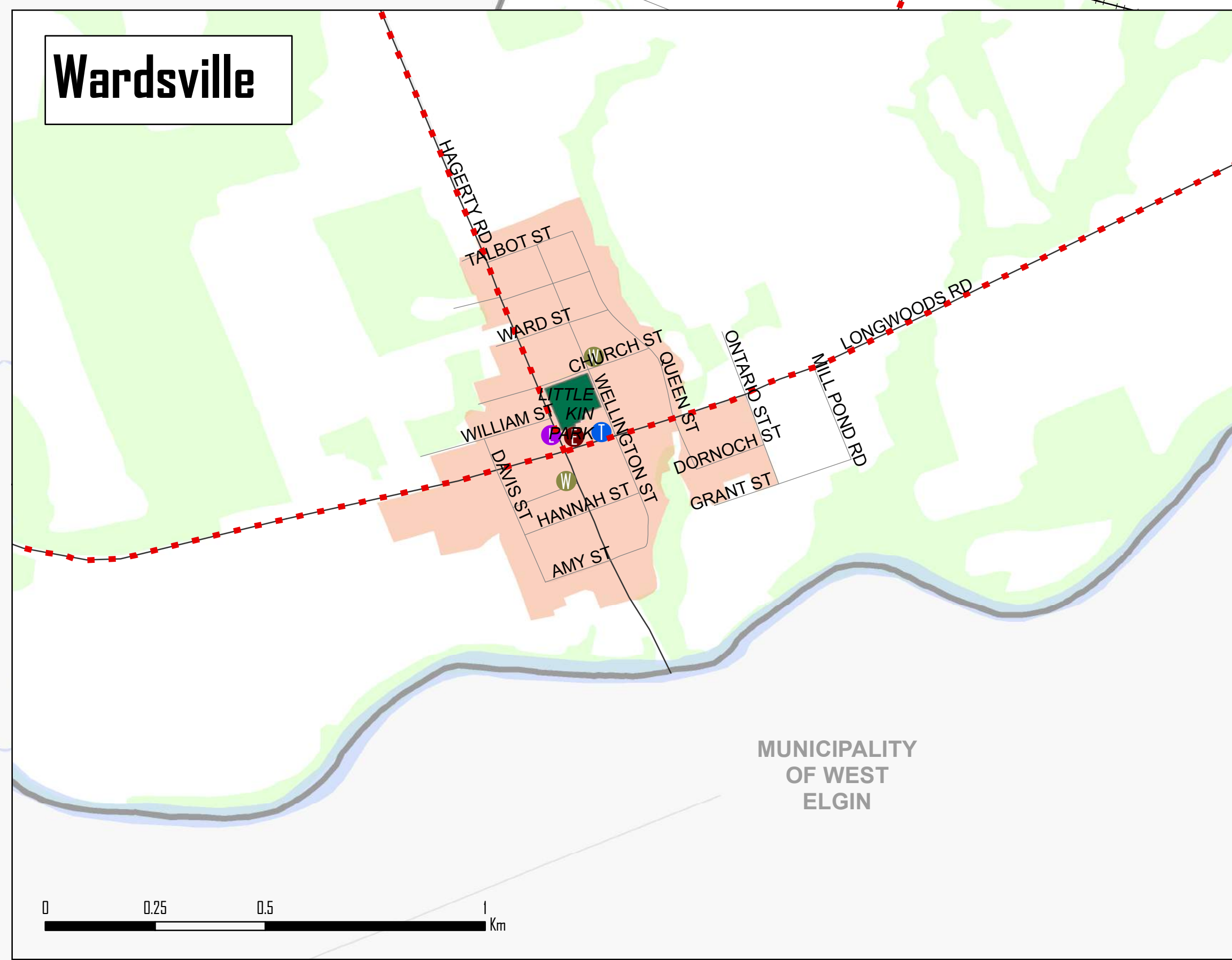
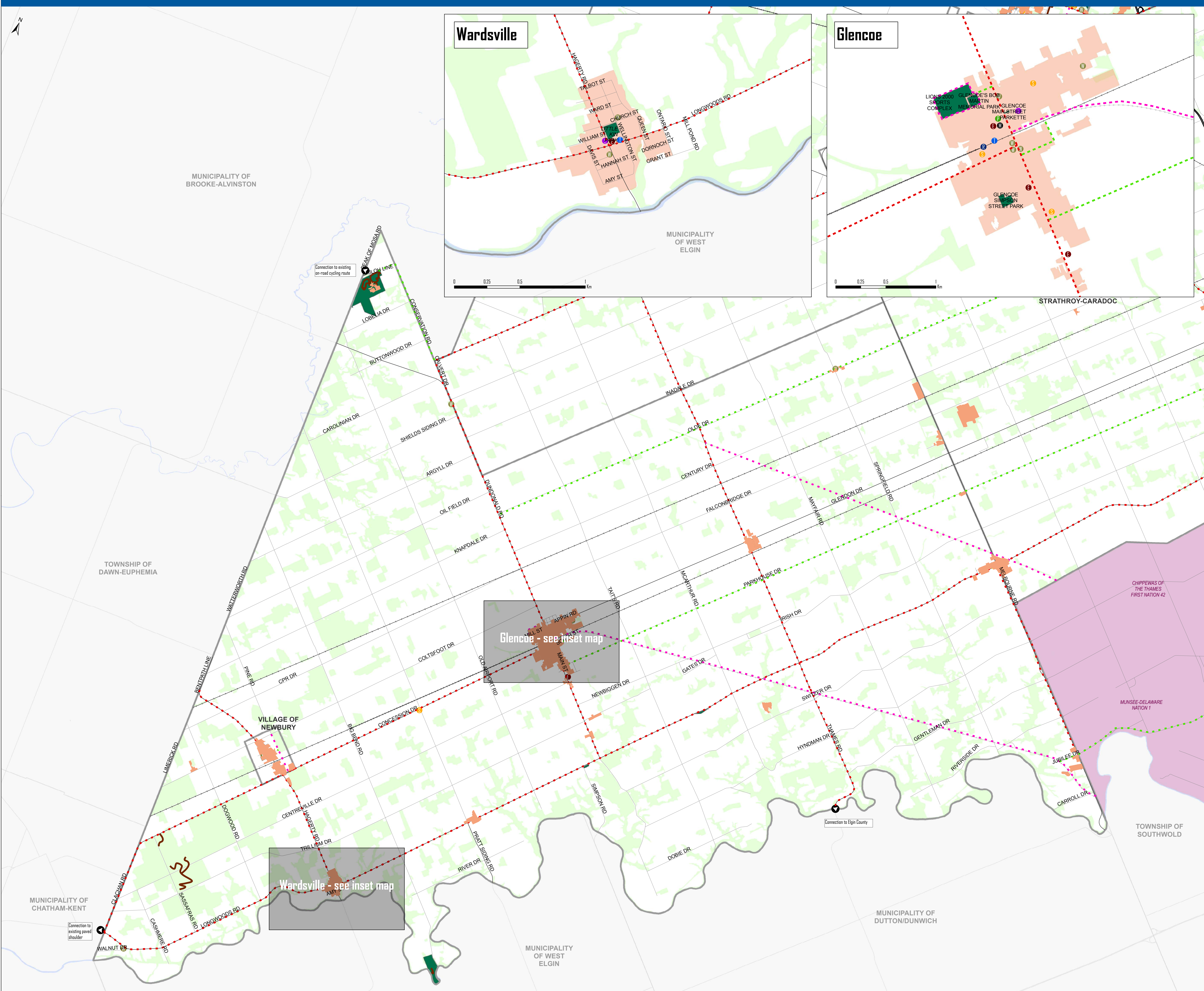
Other

- Municipal Boundary
- Built Up Area
- Provincial Parkland
- First Nations Land
- Natural Heritage System
- Local Parkland

0 125 250 500 m



Projection: UTM Zone 17 N. Datum: NAD 1983.
Map Created in June 2017 by WSP Canada.
Spatial data provided by the County of Middlesex, 2017.
Parcel data © Teranet Enterprises Inc. and its suppliers.
All rights reserved. Not a plan of survey. 2015 Image
includes material © 2016 of the Queen's Printer for
Ontario. All Rights Reserved. Additional data from the
Ontario Ministry of Natural Resources, Queens Printer
2017. Note: Map is not intended for navigation.



MAP 2-5

CANDIDATE CYCLING ROUTES MUNICIPALITY OF THAMES CENTRE

DRAFT JUNE 2017

Legend

Candidate Cycling Routes

- Candidate County Route
- Candidate Local Route
- Candidate Provincial Route
- Candidate Off-Road Trail

Existing Cycling Routes

- Existing On-Road Cycling Facility
- Existing Paved Shoulder
- Existing Off-Road Trail

Previously Proposed Cycling Routes

- Previously Proposed Off-Road Trail

Key Community Destinations

- Hospital
- Libraries
- Municipal Office
- Place of Worship
- Public Parking
- Transit Station
- Emergency Service
- School
- Railway Station

Transportation Features

- Provincial Highway
- County Road
- Local Road
- Proposed Road
- Discontinued Railway
- Operational Railway
- Connection to Surrounding Municipality

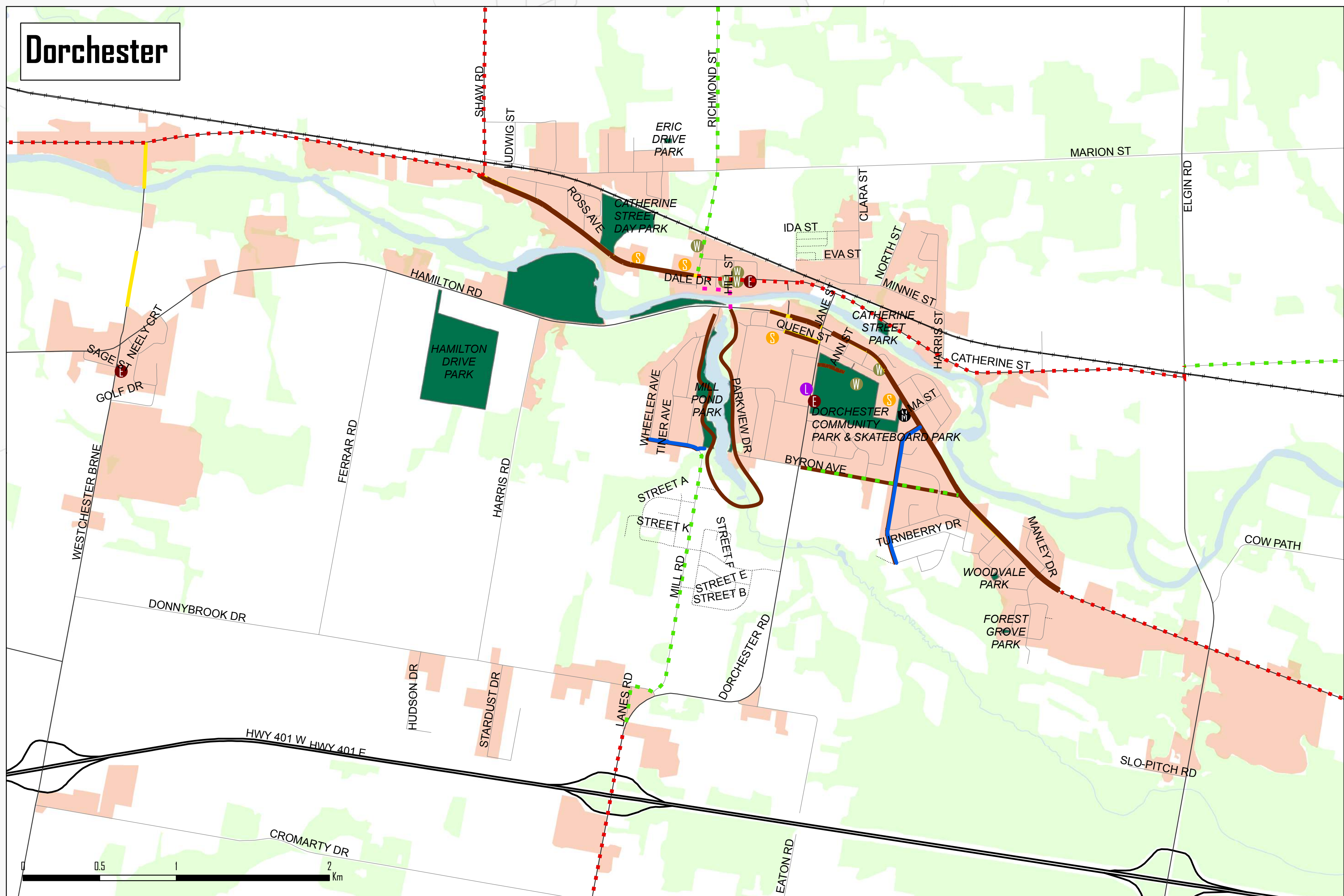
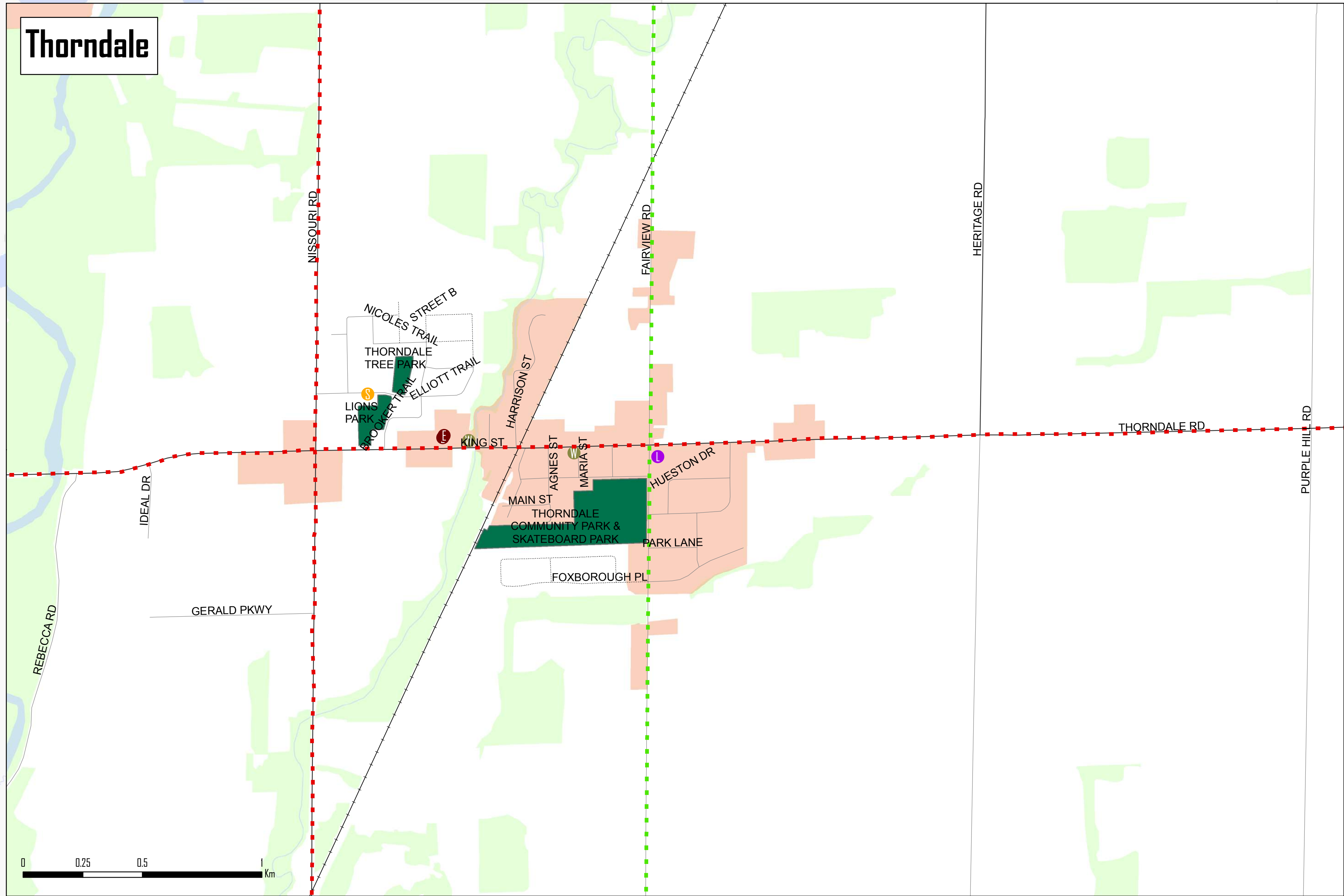
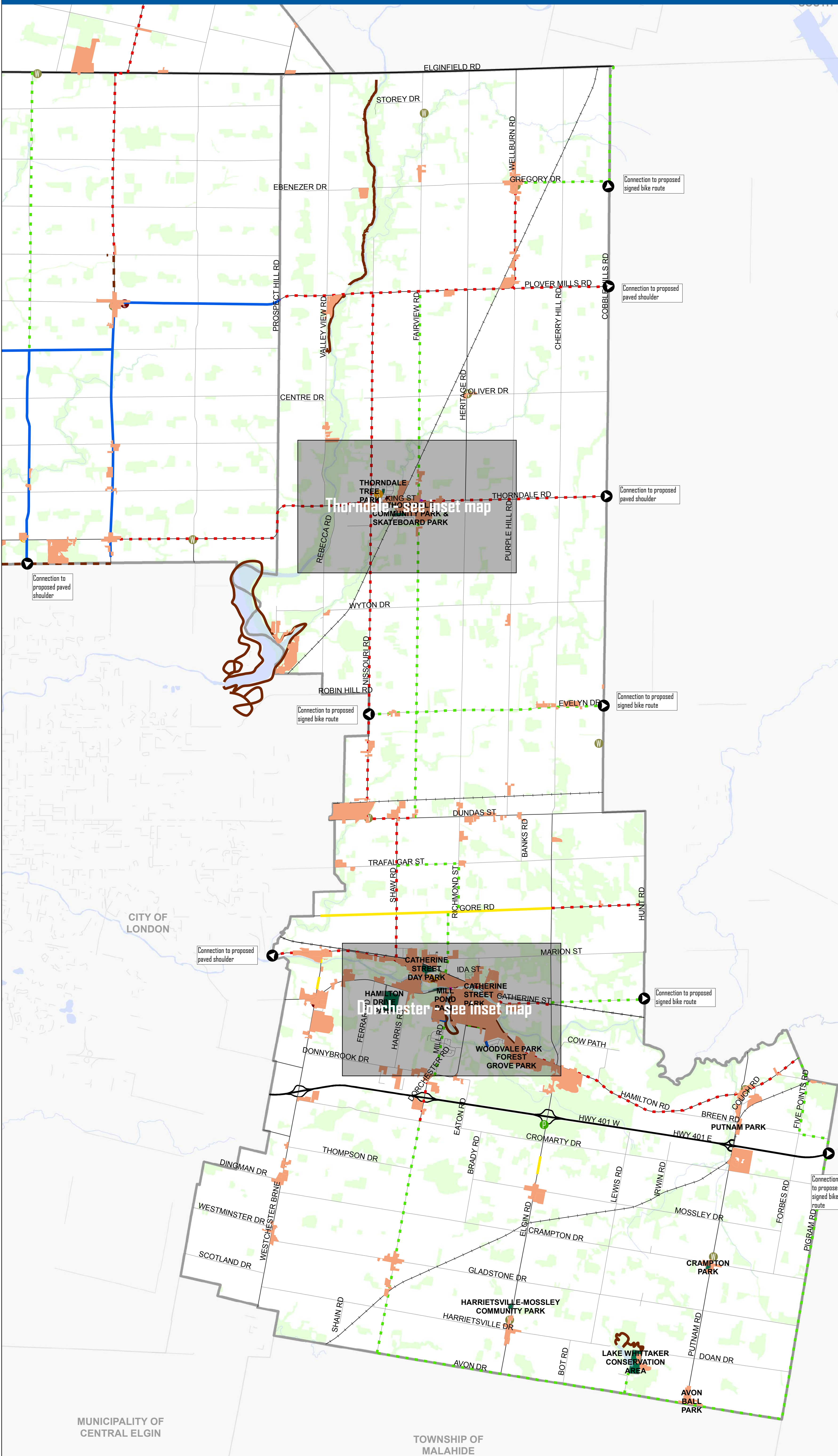
Other

- Municipal Boundary
- Built Up Area
- Provincial Parkland
- First Nations Land
- Natural Heritage System
- Local Parkland

0 1.5 3 6 km



Projection: UTM Zone 17 N. Datum: NAD 1983.
Map Created in June 2017 by WSP Canada.
Spatial data provided by the County of Middlesex, 2017.
Parcel data © Teranet Enterprises Inc. and its suppliers.
All rights reserved. Not a plan of survey. 2015 Image
includes material © 2016 of the Queen's Printer for
Ontario. All Rights Reserved. Additional data from the
Ontario Ministry of Natural Resources, Queens Printer
2017. Note: Map is not intended for navigation.



MAP 2-6

CANDIDATE CYCLING ROUTES TOWNSHIP OF ADELAIDE-METCALFE

DRAFT JUNE 2017

Legend

Candidate Cycling Routes

- Candidate County Route
- Candidate Local Route
- Candidate Provincial Route
- Candidate Off-Road Trail

Existing Cycling Routes

- Existing On-Road Cycling Facility
- Existing Paved Shoulder
- Existing Off-Road Trail

Previously Proposed Cycling Routes

- Previously Proposed Off-Road Trail

Key Community Destinations

- Hospital
- Libraries
- Municipal Office
- Place of Worship
- Public Parking
- Transit Station
- Emergency Service
- School
- Railway Station

Transportation Features

- Provincial Highway
- County Road
- Local Road
- Proposed Road
- Discontinued Railway
- Operational Railway
- Connection to Surrounding Municipality

Other

- Municipal Boundary
- Built Up Area
- Provincial Parkland
- First Nations Land
- Natural Heritage System
- Local Parkland

0 1 2 4 km



Projection: UTM Zone 17 N. Datum: NAD 1983.
Map Created in June 2017 by WSP Canada.
Spatial data provided by the County of Middlesex, 2017.
Parcel data © Teranet Enterprises Inc. and its suppliers.
All rights reserved. Not a plan of survey. 2015 Image
includes material © 2016 of the Queen's Printer for
Ontario. All Rights Reserved. Additional data from the
Ontario Ministry of Natural Resources, Queens Printer
2017. Note: Map is not intended for navigation.



MAP 2-7

CANDIDATE CYCLING ROUTES TOWNSHIP OF LUCAN BIDDULPH

DRAFT JUNE 2017

Legend

Candidate Cycling Routes

- Candidate County Route
- Candidate Local Route
- Candidate Provincial Route
- Candidate Off-Road Trail

Existing Cycling Routes

- Existing On-Road Cycling Facility
- Existing Paved Shoulder
- Existing Off-Road Trail

Previously Proposed Cycling Routes

- Previously Proposed Off-Road Trail

Key Community Destinations

- Hospital
- Libraries
- Municipal Office
- Place of Worship
- Public Parking
- Transit Station
- Emergency Service
- School
- Railway Station

Transportation Features

- Provincial Highway
- County Road
- Local Road
- Proposed Road
- Discontinued Railway
- Operational Railway
- Connection to Surrounding Municipality

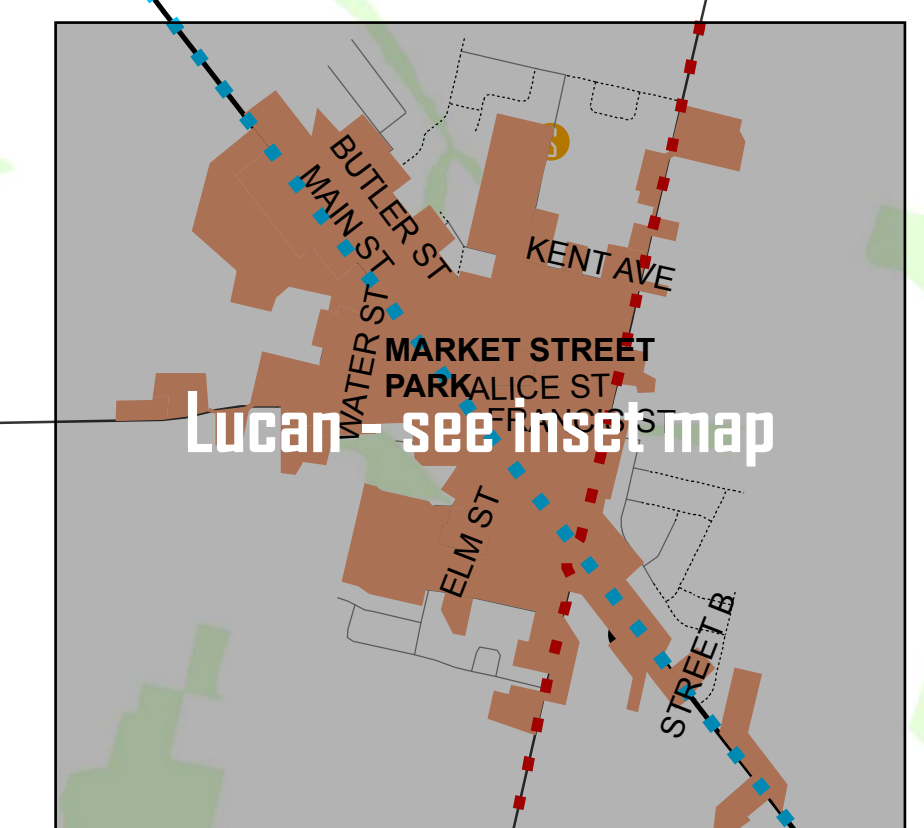
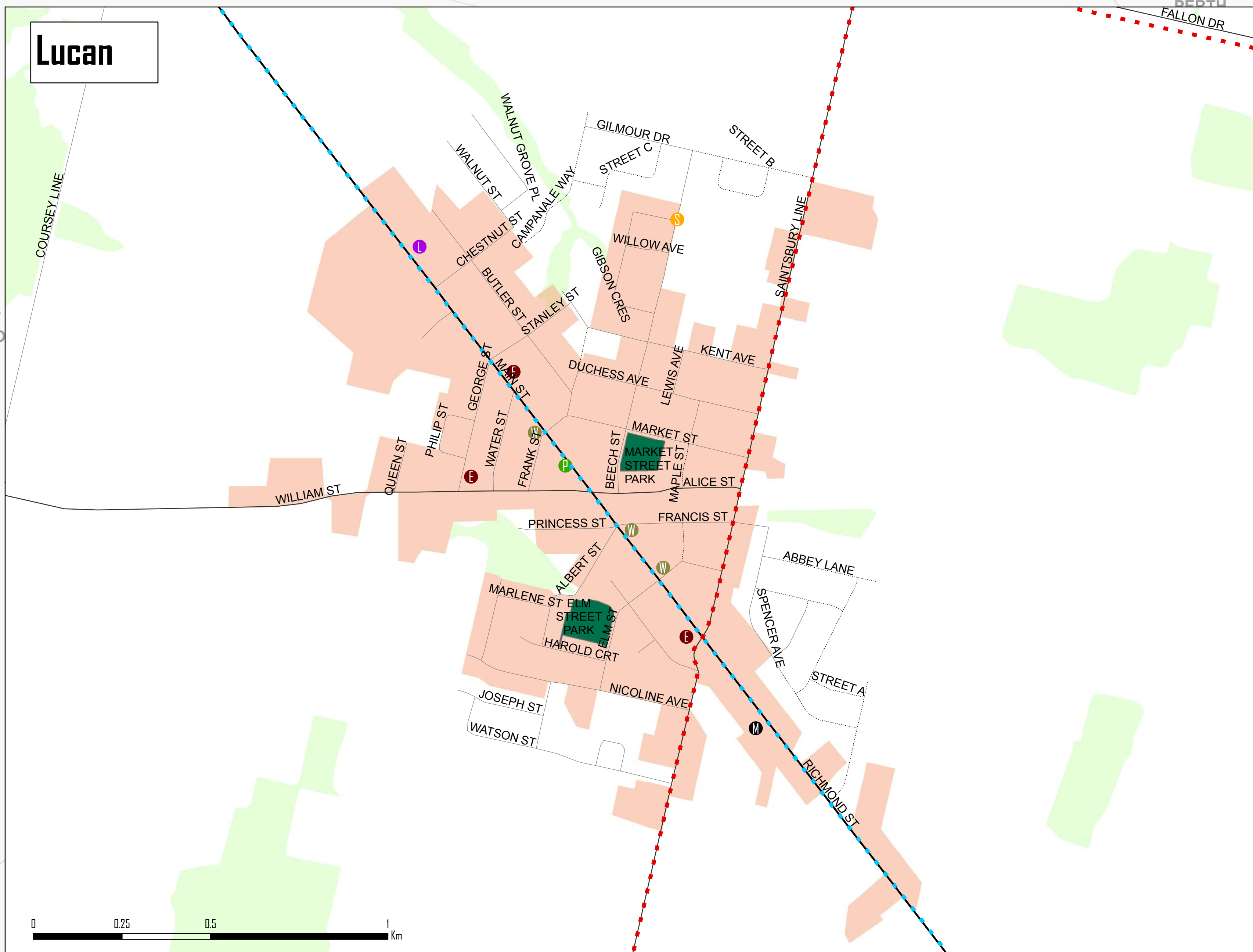
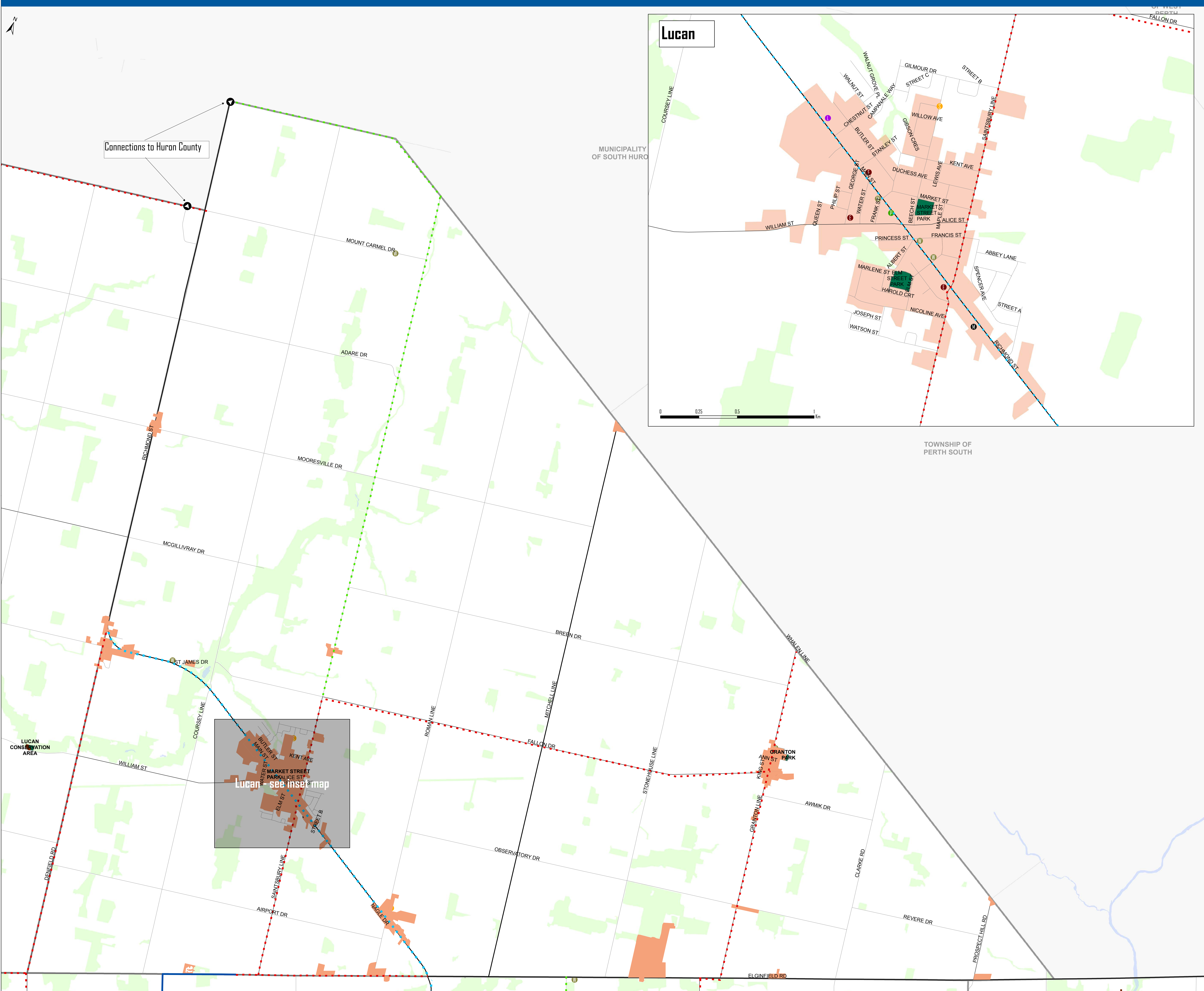
Other

- Municipal Boundary
- Built Up Area
- Provincial Parkland
- First Nations Land
- Natural Heritage System
- Local Parkland

0 0.5 1 2 Km



Projection: UTM Zone 17 N. Datum: NAD 1983.
Map Created in June 2017 by WSP Canada.
Spatial data provided by the County of Middlesex, 2017.
Parcel data © Teranet Enterprises Inc. and its suppliers.
All rights reserved. Not a plan of survey. 2015 Image
includes material © 2016 of the Queen's Printer for
Ontario. All Rights Reserved. Additional data from the
Ontario Ministry of Natural Resources, Queens Printer
2017. Note: Map is not intended for navigation.



MAP 2-8

CANDIDATE CYCLING ROUTES TOWNSHIP OF STRATHROY-CARADOC

DRAFT JUNE 2017

Legend

Candidate Cycling Routes

- Candidate County Route
- Candidate Local Route
- Candidate Provincial Route
- Candidate Off-Road Trail

Existing Cycling Routes

- Existing On-Road Cycling Facility
- Existing Paved Shoulder
- Existing Off-Road Trail

Previously Proposed Cycling Routes

- Proposed Trail

Key Community Destinations

- Hospital
- Libraries
- Municipal Office
- Place of Worship
- Public Parking
- Transit Station
- Emergency Service
- School
- Railway Station

Transportation Features

- Provincial Highway
- County Road
- Local Road
- Proposed Road
- Discontinued Railway
- Operational Railway
- Connection to Surrounding Municipality

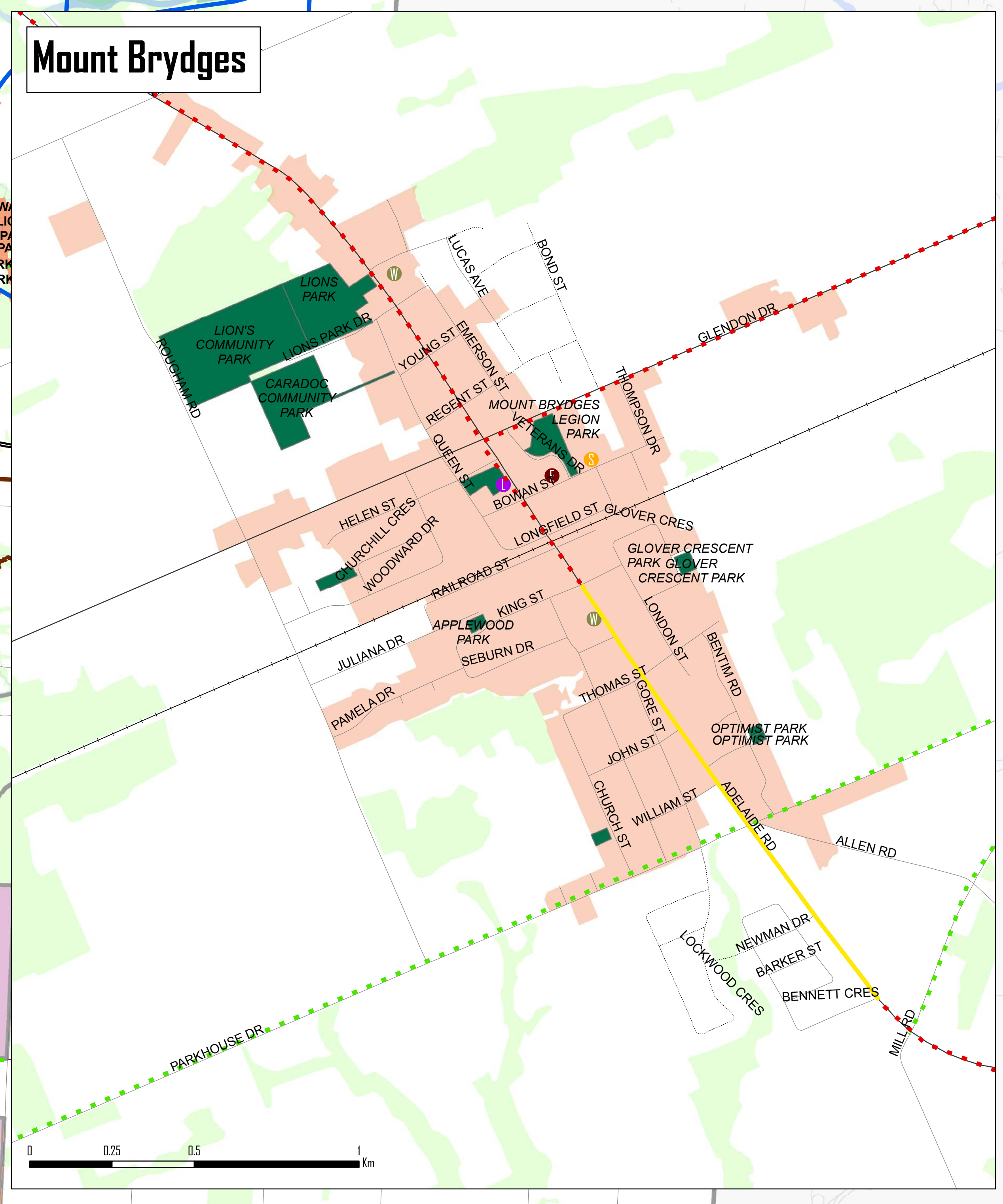
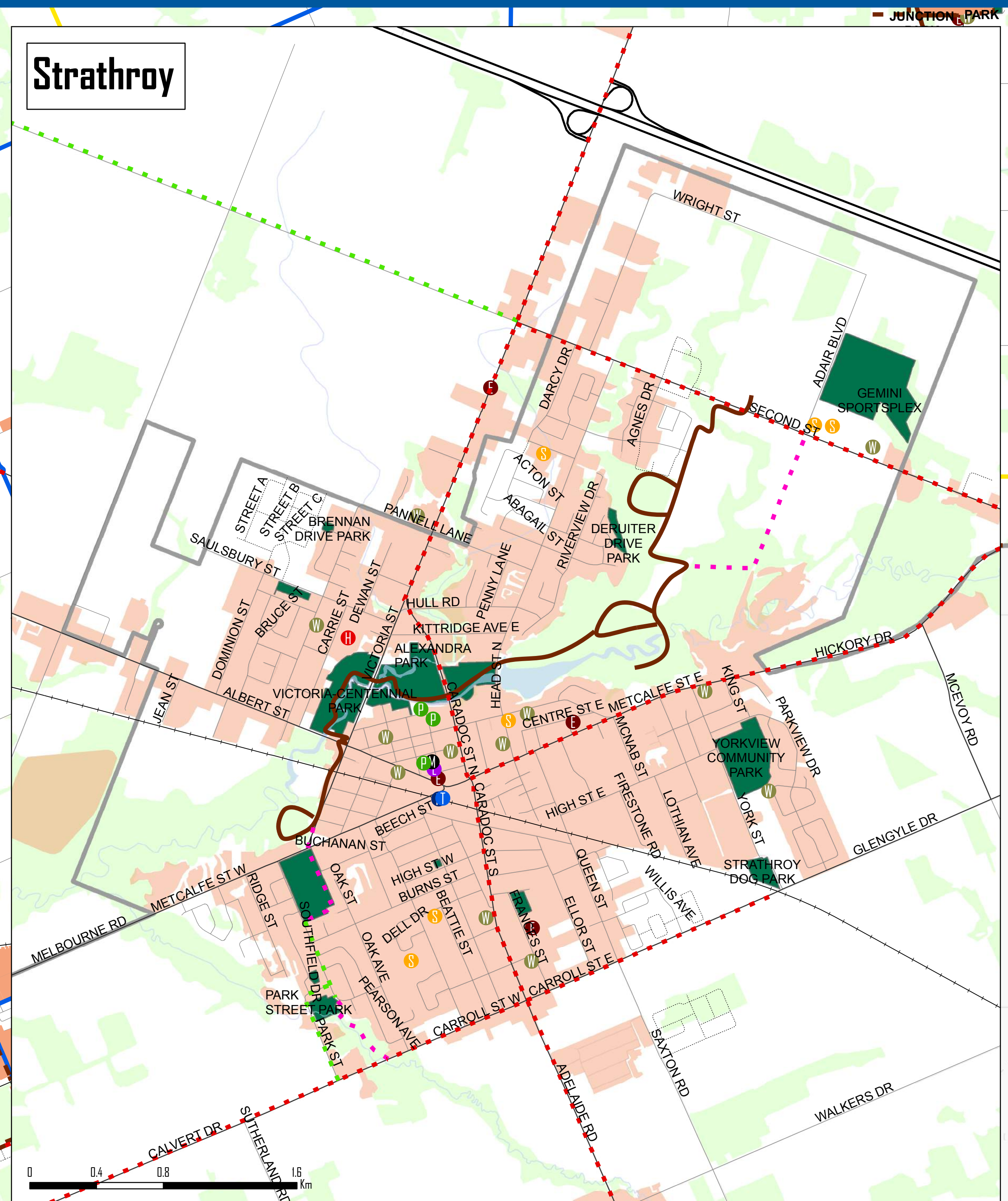
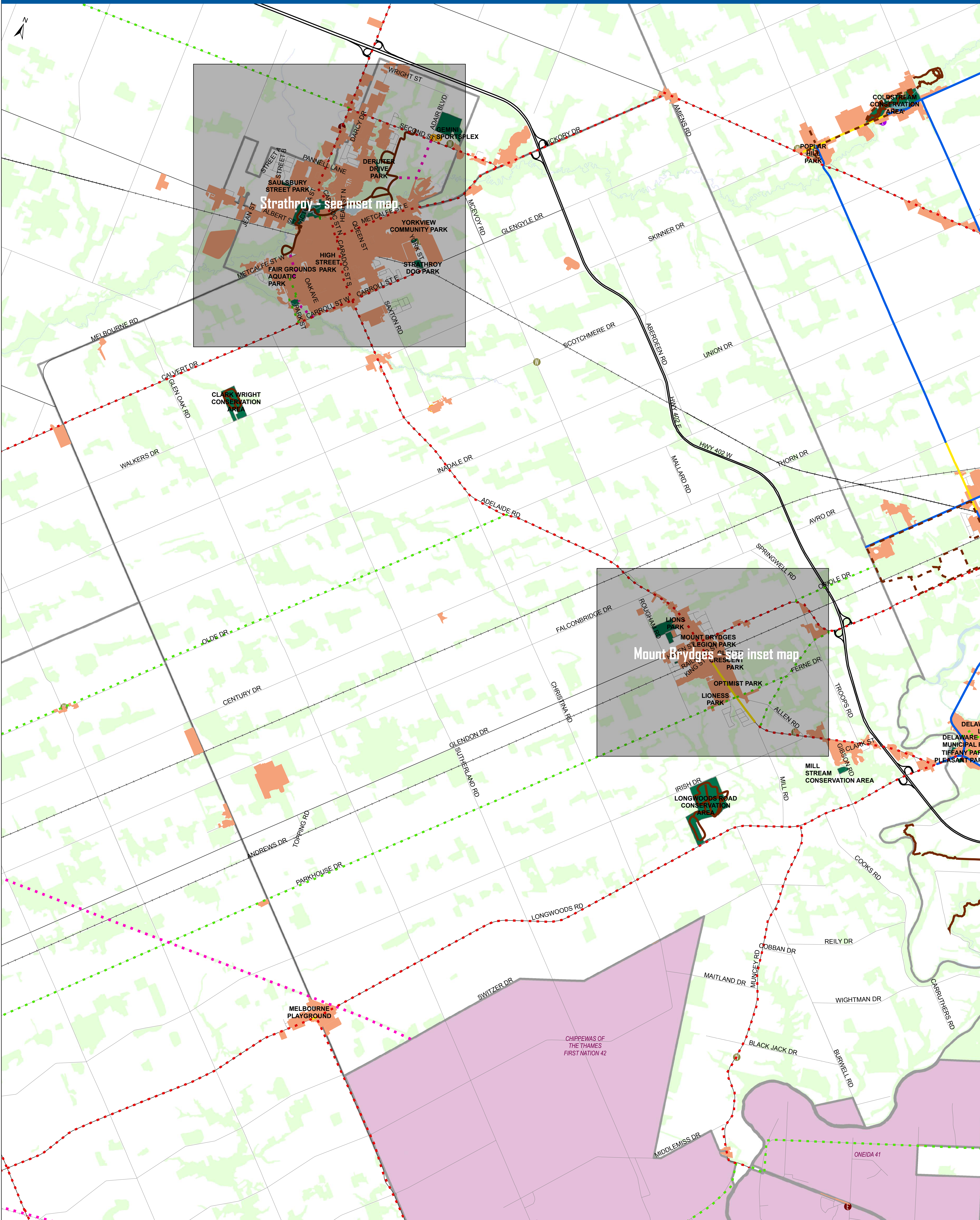
Other

- Municipal Boundary
- Built Up Area
- Provincial Parkland
- First Nations Land
- Natural Heritage System
- Local Parkland

0 1 2 4 km



Projection: UTM Zone 17 N. Datum: NAD 1983.
Map Created in June 2017 by WSP Canada.
Spatial data provided by the County of Middlesex, 2017.
Parcel data © Teranet Enterprises Inc. and its suppliers.
All rights reserved. Not a plan of survey. 2015 Image
includes material © 2016 of the Queen's Printer for
Ontario. All Rights Reserved. Additional data from the
Ontario Ministry of Natural Resources, Queen's Printer
2017. Note: Map is not intended for navigation.



MAP 2-9

CANDIDATE CYCLING ROUTES VILLAGE OF NEWBURY

DRAFT JUNE 2017

Legend

Candidate Cycling Routes

- Candidate County Route
- Candidate Local Route
- Candidate Provincial Route
- Candidate Off-Road Trail

Existing Cycling Routes

- Existing On-Road Cycling Facility
- Existing Paved Shoulder
- Existing Off-Road Trail

Previously Proposed Cycling Routes

- Previously Proposed Off-Road Trail

Key Community Destinations

- Hospital
- Libraries
- Municipal Office
- Place of Worship
- Public Parking
- Transit Station
- Emergency Service
- School
- Railway Station

Transportation Features

- Provincial Highway
- County Road
- Local Road
- Proposed Road
- Discontinued Railway
- Operational Railway
- Connection to Surrounding Municipality

Other

- Municipal Boundary
- Built Up Area
- Provincial Parkland
- First Nations Land
- Natural Heritage System
- Local Parkland

0 75 150 300 Metres



Projection: UTM Zone 17 N. Datum: NAD 1983.
Map Created in June 2017 by WSP Canada.
Spatial data provided by the County of Middlesex, 2017.
Parcel data © Teranet Enterprises Inc. and its suppliers.
All rights reserved. Not a plan of survey. 2015 Image
includes material © 2016 of the Queen's Printer for
Ontario. All Rights Reserved. Additional data from the
Ontario Ministry of Natural Resources, Queens Printer
2017. Note: Map is not intended for navigation.



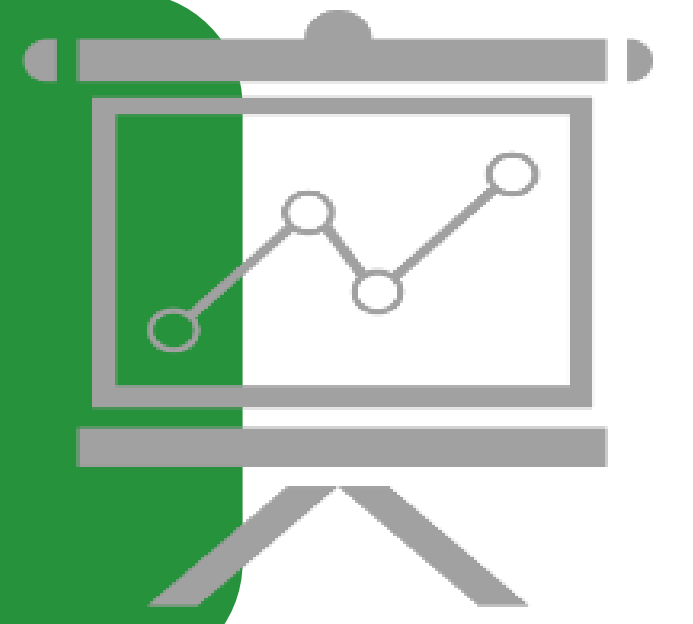
POTENTIAL CYCLING FACILITY TYPES

FACILITY TYPE & LINE COLOUR									
WHERE	U R S	U R S	U R S	U R S	U R S	U R S	U R S	U R S	U R S
ROAD	Generally Lower Traffic Volumes, Lower Vehicle Operating Speeds				Generally Higher Traffic Volumes, Higher Vehicle Operating Speeds				
SPACE	SHARED Facilities where cyclists and motorists share the same space. Typically includes the application of signage in the form of green bike route sign or share the road signage..			DESIGNATED Facilities where cyclists are provided with their own space.		SEPARATED Facilities where the cyclists' space is separated using different design treatments e.g. pavement markings, bollards, mountable or semi-mountable curbs. This also includes off-road facilities (minimum of 3.0m). Pedestrians may share the facility with cyclists.			
CYCLIST	Interested but Concerned Enthusied and Confident Strong and Dedicated								

NEXT

1

Confirm candidate routes



2

Investigate candidate routes in the field



3

Summarize input received through initial consultation



4

Confirm preferred routes & identify facilities



INPUT



Online

Provide your thoughts and ideas online by visiting <https://www.middlesex.ca/node/823>. You can fill out the online survey or use the interactive mapping tool to provide your input.



Events

Attend and provide your input at our upcoming cycling strategy events (see website for dates)



Contact

Send an email to the project team **middlesexcycling@mmm.ca** or phone our project leads (see contact information noted below)

Chris Traini
County of Middlesex
E: ctraini@middlesex.ca
T: (519) 434-7321 Ext. 2264

Jay Cranstone
WSP Canada Group Ltd.
E: cranstonej@mmm.ca
T: (519) 904-1755