



Resident, Family, Friend and Responsible Party Newsletter – June 2026

Dear Strathmere Lodge residents, family members, friends/responsible parties:

1. Lodge Initiative – Strategic Review and Strategic Plan



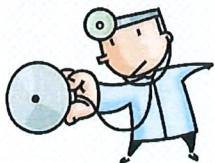
Working with an external consultant firm (the Centre for Organizational Effectiveness, in London), our strategic planning efforts are in full swing to establish our Lodge “roadmap” for the coming years in the form of a written strategic plan

document.

Meetings have taken place with staff, residents and families to elicit feedback in the development of The Lodge Strategic Plan. For those who could not attend a meeting, an on-line survey was made available.

The Consultant is currently compiling draft strategic plan material reflective of the feedback received from residents, families and staff, which will then be further refined by residents/families/staff to spell out The Lodge’s 5-year plan for the future.

2. Dr. Mohamed Mithoowani, Lodge Attending Physician



Further to last month’s newsletter announcement, Dr. Mithoowani has retired from providing attending physician services to residents at The Lodge effective May 29, 2026.

Dr. Mithoowani was an attending physician at The Lodge for 30+ years. With tremendous appreciation for his dedication to the residents and families at The Lodge, we wish him well in his future endeavours.

Residents served by Dr. Mithoowani will now be served by Drs. Ulanda Singh and Stephen McDonald.

3. Recent Ministry of Long-Term Care Inspection



As per provincial long-term care home legislation, all 626 long-term care homes, including The Lodge, are required to submit “critical incident” reports to the Ministry of Long-Term Care (“The Ministry”) when such an incident occurs. A list of critical incidents is defined in our legislation (Fixing Long-Term Care Act, 2021, and Ontario Regulation 246/22, at: <https://www.ontario.ca/laws/regulation/r22246>).

In keeping with our legislation, The Lodge submitted a critical incident report to The Ministry regarding a witnessed incident of Verbal/Emotional Abuse toward residents, which promptly led to the employment termination of the applicable Lodge staff member.

As per Ministry protocol, Ministry Inspectors visited The Lodge to review our critical incident report submission. While satisfied with The Lodge’s response to the reported critical incident, Inspectors determined, through discussions with individual Lodge staff, that the aforementioned ex-employee had previously demonstrated similar behaviour that went unreported. As such, Ministry Inspectors issued The Lodge orders to re-train all Lodge staff on what constitutes Abuse, and most notably, on every staff member’s legal responsibility to report suspected/witnessed abuse so that it may be investigated and addressed.

The Lodge takes this matter with the utmost seriousness, and is currently wrapping up the mandated staff re-training, along with implementing other on-going measures to mitigate any future related incidents.

If you have any questions, please contact Brent Kerwin, Lodge Administrator (519-245-2520, x6222, or via email at: bkerwin@middlesex.ca).

Note that a copy of the Ministry report is posted at The Lodge Reception area, and is available on-line via the province’s public reporting website (<https://publicreporting.ltchomes.net>).

4. Next Lodge Family Council Meeting



This group of involved and caring friends and family members meets on a regular basis to share information and discuss common issues. The next meeting is on Thursday, June 25, 2026, at 1:30pm, in the Chapel.

Lodge Staff Educator, Amanda Inglis, will be doing a talk on Abuse legislation in long-term care homes.

All family/friends of residents of Strathmere Lodge are welcome to attend. No pre-registration is necessary.

For more information, please contact Kristie Ouellette, Resident and Family Liaison (519-245-2520, ext. 6223, or kouellette@middlesex.ca).

Minutes of the most recent Family Council meeting are posted on the family information board in the Rose Room (near the Chapel), and previous minutes are available for review at our Reception desk.

5. Provincial Notice of Room Co-payment Increase



The province has implemented an annual co-payment room rate increase of 2.0% effective July 1, 2026. This increase pertains to both Basic and Private rooms. Please see the attached provincial notice outlining the change.

The co-payment is typically increased annually by the province effective July 1st. Long-term care homes have no control over the co-payment amount.

Those residents in a Basic room with a low income may qualify for a reduced co-payment amount as determined by the province. **Those already receiving the reduced rate must re-apply annually** at this time to determine on-going eligibility for a reduced rate. As applicable, please ensure The Lodge has your 2025 Notice of Assessment (NOA) from Revenue Canada, so we can determine co-payment rate reduction eligibility.

Please contact Augustine Caines, Office Supervisor (519-245-2520, ext. 6246, or via email at: acaines@middlesex.ca), if you have any questions on the province's co-payment.

6. June Special Events



Please pick up and check out our monthly Recreation calendar (given to every individual resident, in addition to being available in each Resident Home Area, and on our [web page](https://www.middlesex.ca/departments/long-term-care/recreation) at: <https://www.middlesex.ca/departments/long-term-care/recreation>)

for events that you may find of interest and would like to attend.

Our upcoming events for June include:

- Wed., June 3rd, 2pm – Deb & Fred entertain (in the Rose Room)
- Sat., June 13th, 2pm – Klassic Country entertains (in the Rose Room)
- Wed., June 24th, 2pm – Lodge Ladies' Auxiliary Annual Strawberry Social with entertainment by Jeremy Smith (outdoors weather permitting)
- Tues., June 30th, 2pm – Canada Day Happy Hour with entertainment by Randy Grey (in the Rose Room)

7. Lodge Improvements Implemented



As part of adhering to our provincial long-term care homes legislation, we communicate initiatives we implement aimed at improving our care, services, programs, goods/products and/or accommodations. To that end, improvements made since our last

newsletter include:

- New “Carendo” Shower Chair (allows staff to shower and dress applicable residents in a single transfer – for residents with little/no trunk control, who would prefer a shower versus a bath)
- New Furniture for Rose Room/Reception area and Bear Creek “Calming Room”

8. Labelling of Residents' Clothing



To prevent missing clothing ... This is a reminder that new clothing needs to be labelled with the resident's name before a resident begins to wear it (this also includes items such as shoes/slippers and personal blankets/throws). Please ensure that you use the Clothing Bin near the main entrance to deposit clothing requiring labelling, after inventorying the clothing items on the form provided at the bin (further instructions are provided at the clothing bin). Note that, if clothing enters our laundry system without first having a resident's name affixed, it may not be possible to trace unlabelled clothing back to the applicable resident.

For inquiries regarding missing clothing and the like, please contact Jeff Turnbull, Lodge Environmental Services Manager, at (519) 245-2520, ext. 6244 (or, via email: jturnbull@middlesex.ca).

9. Labelling of Other Personal Resident Items



Apart from clothes labelling noted above, residents/families are encouraged to label other personal resident effects (including new items brought to The Lodge from time-to-time), notably items that are more portable in nature, such as TV remote controls.

10. In Conclusion



Please let me know if you would like to see certain issues addressed in future newsletter editions (contact Brent Kerwin, Administrator, 519-245-2520, ext. 6222, or via email at: bkerwin@middlesex.ca).

Please share a copy of this newsletter with other family members and friends, or direct them to our **web page**: <http://www.middlesex.ca/departments/long-term-care>.

Hardcopies of our newsletter are also maintained at our Public Information Board near Reception. Copies of older newsletter editions are compiled in binders at our Reception Desk, and are available for your review.

Brent Kerwin, Administrator

Bulletin to Residents of Long-Term Care Homes: Important News Regarding Long-Term Care Home Accommodations Charges

Ministry of
Long-Term Care

SPRING 2026

Renseignements aussi
disponibles en français

Basic Accommodation Rates

On July 1, 2026, the maximum co-payment that residents pay for basic accommodation in Long-Term Care (LTC) homes **will increase by \$1.44 per day from \$68.56 per day to \$70.00 per day**, consistent with recent inflationary increases. This will help cover the rising costs of meals and accommodation.

Preferred Accommodation Rates

The maximum charges will also be increasing for residents in preferred accommodation beds as of July 1, 2026. The premium charged for a newer bed in semi-private accommodation will increase by \$0.30 from \$14.10 to \$14.40 per day, and the premium for a newer bed in private accommodation will increase by \$0.62 from \$29.39 to \$30.01 per day.

The table below provides the new rates that will apply as of July 1, 2026 to all types of accommodation based on a resident's date of admission to the bed.

Type of Accommodation	Daily Rate	Monthly
Long-Stay Resident:		
Basic	\$70.00	\$2,129.17
Semi-Private		
Residents admitted to newer beds on or after July 1, 2015.	\$84.40	\$2,567.17
Residents admitted to newer beds on or after September 1, 2014, but prior to July 1, 2015.	\$83.19	\$2,530.37
Residents admitted to newer beds on or after July 1, 2013, but prior to September 1, 2014.	\$82.00	\$2,494.17
Residents admitted to newer beds on or after July 1, 2012, but prior to July 1, 2013.	\$80.77	\$2,465.76
Residents occupying older beds, or residents admitted to newer beds prior to July 1, 2012.	\$79.61	\$2,421.47

Continued...

Private

Residents admitted to newer beds on or after July 1, 2015.	\$100.01	\$3,041.97
Residents admitted to newer beds on or after September 1, 2014, but prior to July 1, 2015.	\$97.90	\$2,977.79
Residents admitted to newer beds on or after July 1, 2013, but prior to September 1, 2014.	\$95.79	\$2,913.62
Residents admitted to newer beds on or after July 1, 2012, but prior to July 1, 2013.	\$93.70	\$2,850.04
Residents occupying older beds, or residents admitted to newer beds prior to July 1, 2012.	\$91.58	\$2,785.56

Short-Stay Resident (Respite Bed)

\$45.31 N/A

NOTE: “Newer beds” – beds classified as “NEW” or “A” according to ministry design standards

“Older beds” – beds classified as “B”, “C”, “Upgraded D” or “D” according to ministry design standards

Effective from July 1, 2026, the basic accommodation rate is determined using the following formula:

- July 2025 rate x (1 + CPI Rate up to a maximum of 2.5%) = 2026 co-payment rate.
[i.e., \$68.56 x (1+2.1%) = \$70.00]
- The monthly rate is determined by multiplying the daily rate by 30.4167.
[i.e., \$70.00 x 30.4167 = \$2,129.17]

If you have requested a transfer from your current accommodation into a preferred accommodation bed, please call the LTC home administrator to confirm the rate that you will be required to pay. Preferred rates for semi-private and private accommodation in your current LTC home or in another LTC home may be different if you are offered a bed on or after July 1, 2026.

If you are currently paying less than \$68.56 per day because you are receiving a reduction in the basic co-payment, known as a “Rate Reduction,” then you should reapply for a rate reduction as the current rate reduction term ends on June 30, 2026. All residents receiving a rate reduction should re-apply for a reduction in the basic co-payment rate for the 2026-27 cycle, beginning on July 1, 2026. Staff at your LTC home will provide you with the application form and will help you to submit your application to the Ministry of Long-Term Care.

For more information on co-payment rates or the changes to the rate reduction application process, please speak with your home’s Administrator. Should you have any additional questions, please contact: LTC.RateReduction@ontario.ca.